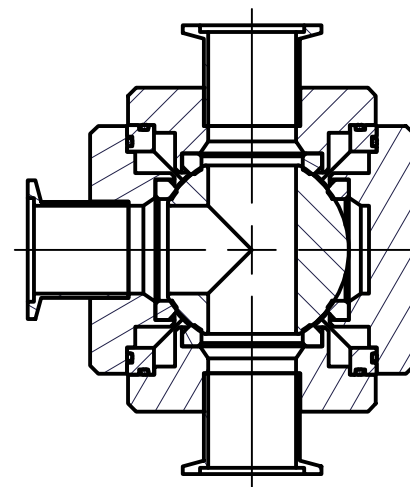
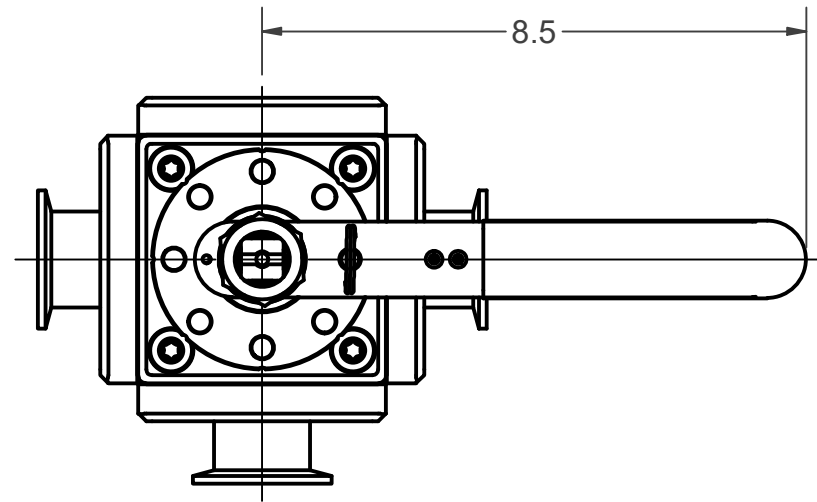


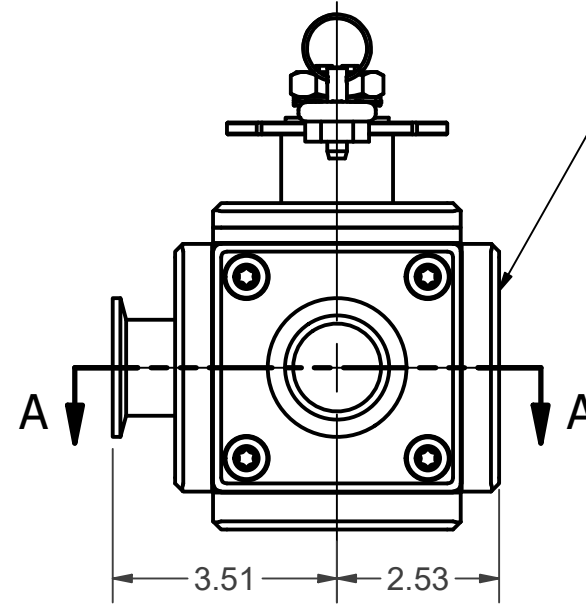
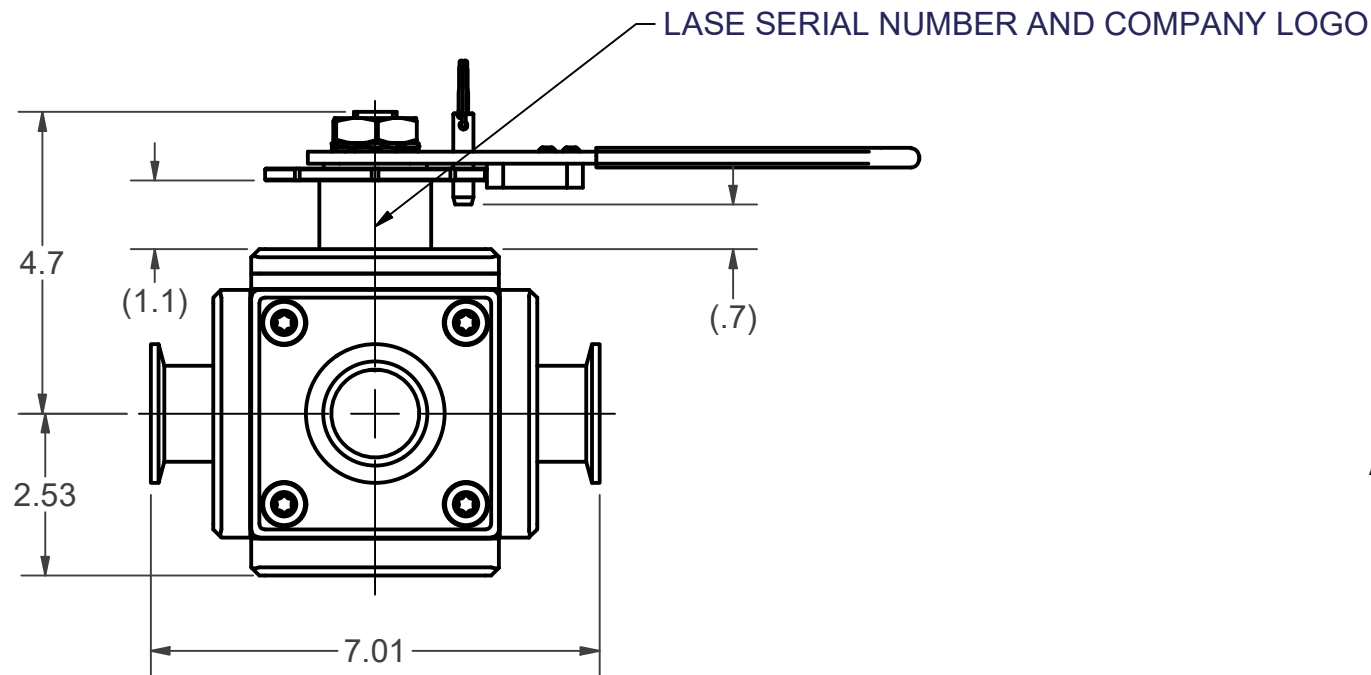
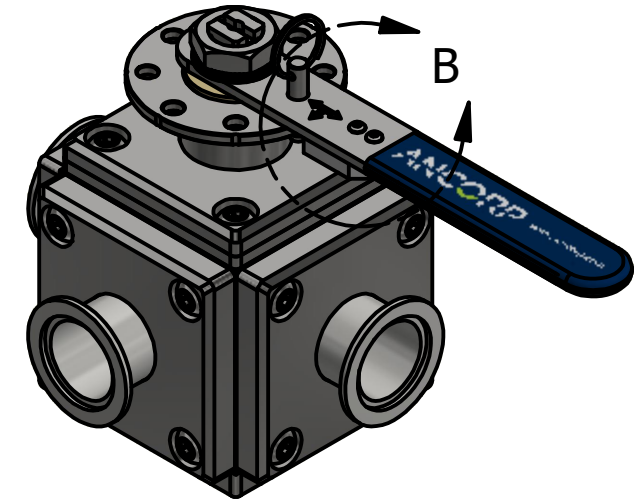
THE DOCUMENT AND DATA DISCLOSED HEREIN AND HERewith IS NOT TO BE REPRODUCED, USED, OR DISCLOSED IN WHOLE OR IN PART WITHOUT THE PERMISSION OF ANCORP.

NOTES:

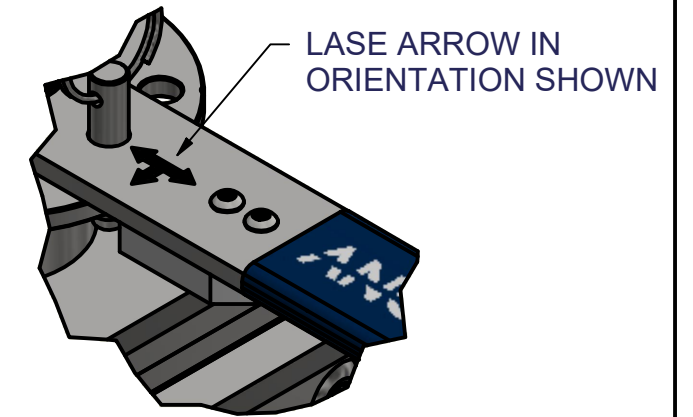
1. All welds will be according to ASME standards for vacuum vessels.
2. Clean parts of machining and fabrication fluids, grease, and any other contaminants.
3. Drawing to be interpreted per ASME Y14.



SECTION A-A



LASE SERIAL NUMBER, COMPANY LOGO, MADE IN USA, US FLAG, AND PATENT INFO



DETAIL B

Item	Description
Valve Model/Type	1 1/2 Inch Multiport Ball Valve, Manual Actuation
Valve Connection	QF40
Ball Port Size	Ø 1.38"
Valve Material	Valve body, ball, stem, and end caps are made from 316L stainless steel. Stem bearings are PEEK.
Valve Seats	PTFE
O-Rings	FKM
Lubricant	Dow Corning® high vacuum grease/DuPont Molykote® used to lubricate o-rings and seats
Valve	Vacuum rating: 1x10 ⁻⁸ Torr
Valve	Leak rate guaranteed less than 1x10 ⁻⁹ std cc/s of helium
Valve	Evac hole located in ball's stem slot, perpendicular to horizontal ball bore
Valve Marking	Laser engraved serial number, company logo and info, country of origin, and patent info

UNLESS OTHERWISE SPECIFIED, DIMENSIONS ARE IN INCHES

UNLESS OTHERWISE SPECIFIED, BREAK ALL EDGES .015 X .015

TOLERANCES:
 .X ± .100
 .XX ± .050
 .XXX ± .025
 ANGLES ± .5 DEG

FINISH: 32 µin. MAX, UOS

DO NOT SCALE DRAWING, USE DIMENSIONS ONLY

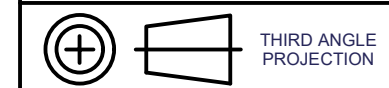
APPROVALS

DATE

DRAWN	ASD	6/28/2023
CHECKED	RCB	6/29/2023

MATERIAL VARIOUS

FINISH VARIOUS



THIRD ANGLE PROJECTION

ANCORP
 WILLISTON, FLORIDA (800) FLANGE1
 WWW.ANCORP.COM

MP150-3H-QF40XQF40XQF40-S-M1-T1

1 1/2 INCH MULTIPORT BALL VALVE, 3H BODY, QF40 FLANGES, STANDARD, MANUAL POS 1, T PORT POS 1

SIZE	DRAWING FILE	DRAWING NO.	REV.
B	3300008.idw	3300008	A
SCALE	NTS	INVENTOR	SHEET 1 OF 1